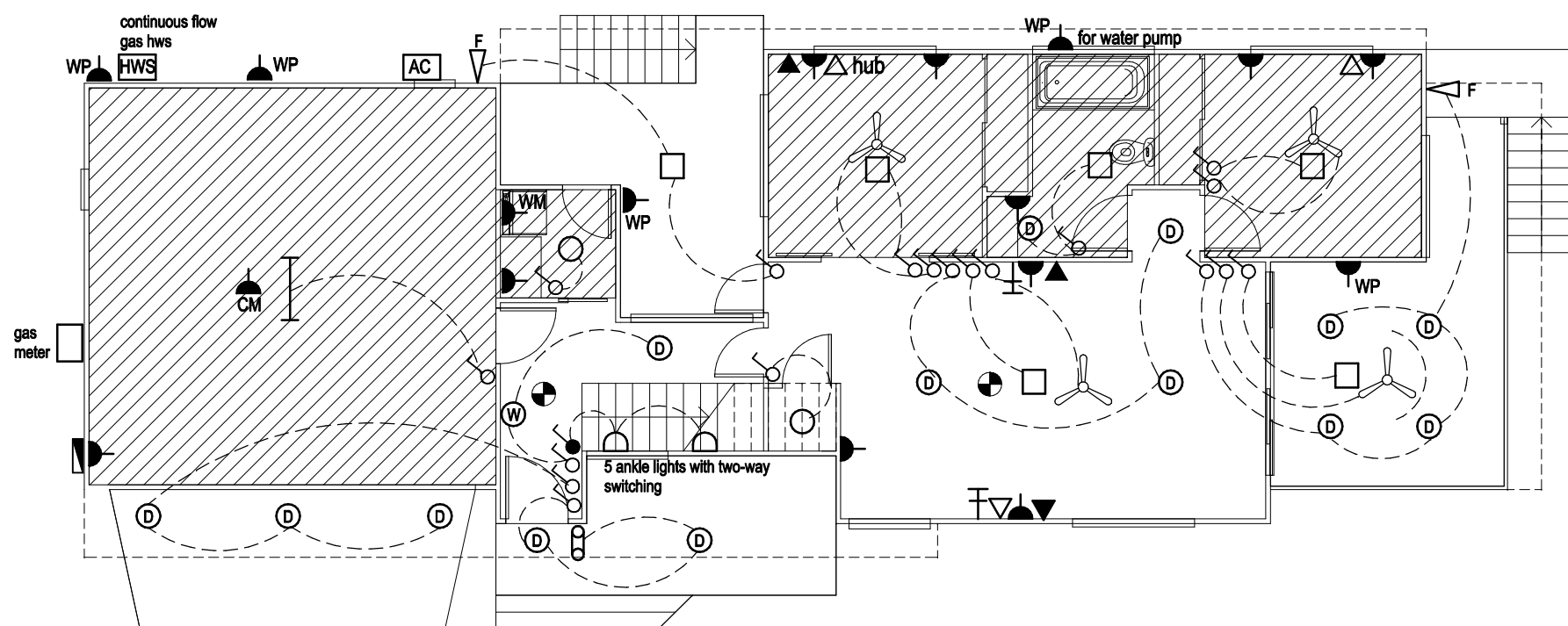


**LEGEND**

- ⊙ ceiling mounted light
- batten holder
- ◻ square gimbal downlight
- ◻ square fluorescent light
- ⌒ ankle lights
- ⌒ single general purpose outlet
- ⌒ double general purpose outlet
- ⊥ television point
- ▽ data point
- ▼ telephone point
- ▭ MB meter box
- ⊙ smoke alarm (240V battery backup)
- ⊙ 3 in 1 exhaust fan
- fluorescent bar light
- ⊙ wall light
- ⊙ recessed downlight
- ⊙ adjustable recessed downlight
- ▽ floodlight
- AC air conditioning unit
- chrome up-down light
- GAS HWS gas hot water system
- switch
- two-way switch
- D ○ switch with dimmer
- ⊙ ceiling fan
- FRIG connection for refrigerator
- DW connection for dishwasher
- WM connection for washing machine
- HWU connection for hot water unit
- WP weatherproof
- CM ceiling mounted double gpo
- HP connection for hot plate & oven (permanently wired)
- RH connection for range hood
- MW connection for microwave

40% energy efficient lighting



**ENERGY EFFICIENT LIGHTING**

FLUORESCENT LIGHTS OR COMPACT FLUORESCENT LIGHTS (CFLs) ARE TO BE USED IN 40% OF THE TOTAL AREA OF ALL ROOMS. AREA MEASURED TO INCLUDE GARAGE.